

CHAIRMAN’S MESSAGE.....2

FROM THE EDITOR.....2

MEETING REPORTS

The 2005 CCP13/NCD Workshop - Cardiff / C. Knupp and T. Wess.....3

TECHNICAL REPORTS

Small Angle X-ray Scattering on Diamond / N.Terrill.....5

The CCP13 FibreFix Program Suite and Recent Updates /
G. Rajkumar, H. AL-Khayat, F. Eakins, C. Knupp and J.M. Squire.....10

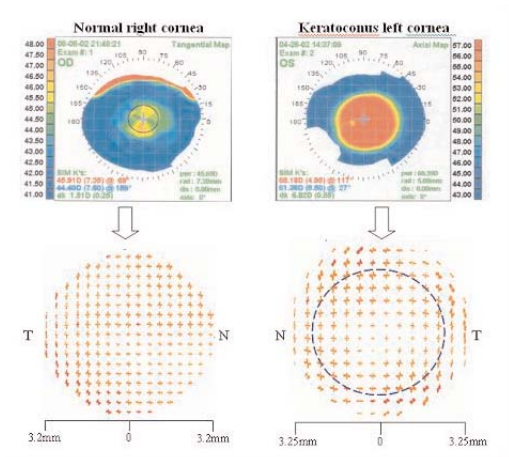
EXPANDED POSTER-PRIZE ABSTRACTS

The relationship between surface corneal topography and
stromal collagen organisation in normal and keratoconus
corneas. S. Hayes, C. Boote, Y. Huang and K.M. Meek.....15

Time-resolved X-ray diffraction studies of contracting fish muscle.
F. Eakins, C. Knupp, C. Pinali, G.Rajkumar, A. Gleeson and J.M. Squire.....22

14th ANNUAL WORKSHOP ABSTRACTS.....30

INSTRUCTIONS TO AUTHORS.....Inside back cover



Cover Image: Application of fibre X-ray diffraction to analysis of abnormal corneas. Videokeratography images (top) and corresponding scanned array vector plot maps (below) from X-ray fibre patterns of a normal cornea (left) and a keratoconus cornea (right). For details see Hayes et al. (this volume).

Editorial Office:

Editor: Prof John Squire, Biological Structure and Function Section, Imperial College London, SW7 2AZ.

Production: Ms Toun Baruwa, Biological Structure and Function Section, Imperial College London, SW7 2AZ.